

Subject : 55th International Paris Air Show (SIAE) - Paris Le Bourget - LFPB

With effect : From 09th to 22nd June 2025

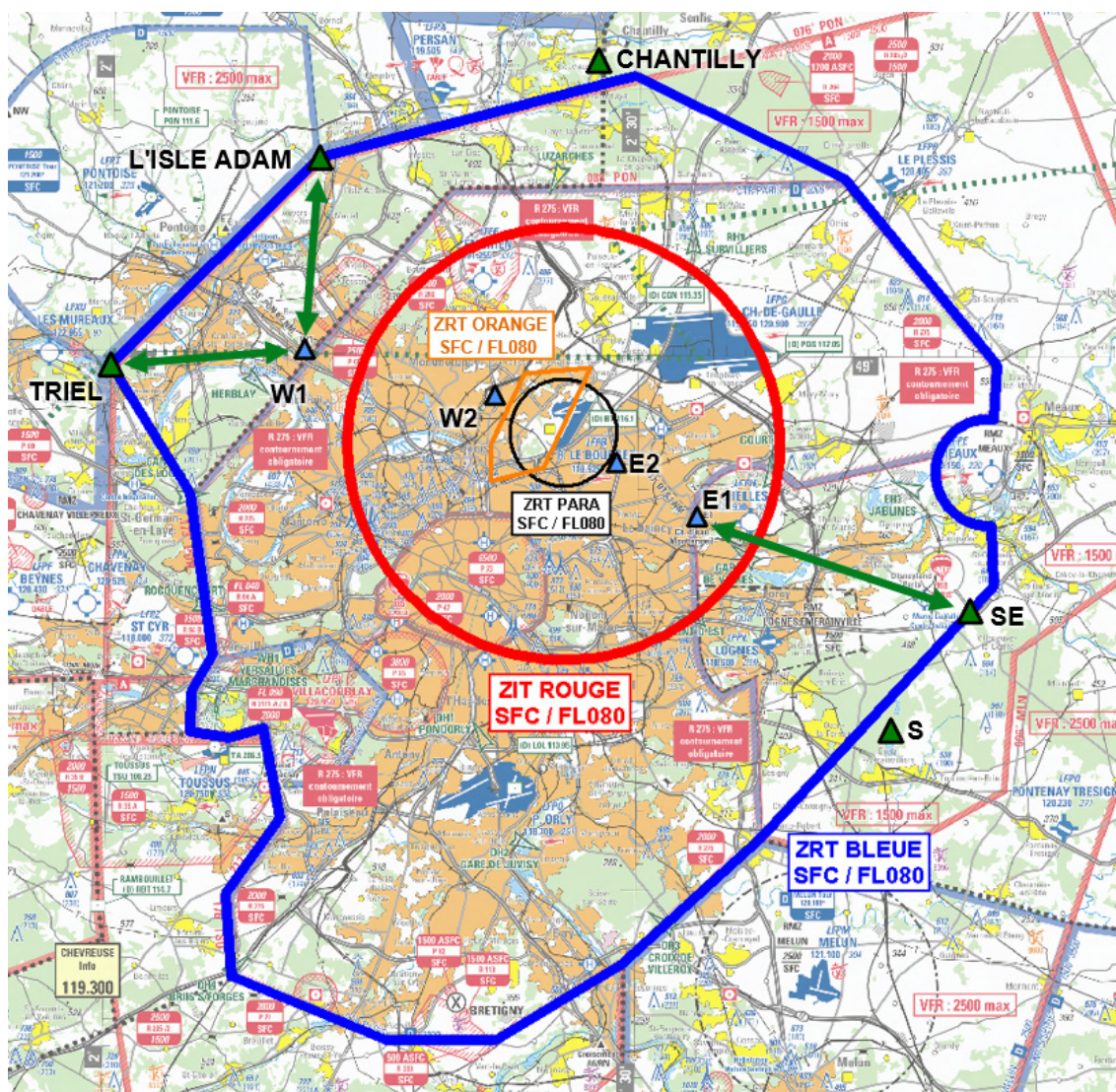
Location : FIR : Paris LFFF - AD : Paris Le Bourget LFPB, Paris Charles de Gaulle LFPG, Paris Orly LFPO, Paris Issy les Moulineaux LFPI, Villacoublay Vélizy LFPV, Chelles le Pin LFPH, Enghien Moisselles LFFE, Lognes Emerainville LFPL, Meaux Esbly LFPE, Paris-Saclay-Versailles LFPN, Pontoise Corneilles en Vexin LFPT, Beauvais Tillé LFOB, Persan Beaumont LFPA, Le Plessis Belleville LFPP, Les Mureaux LFXU, St-Cyr-l'Ecole LFPZ, Chavenay Villepreux LFPX, Beynes Thiverval LFPF, La Ferté Alais LFFQ, Melun Villaroche LFPN, Fontenay Tresigny LFPQ, Coulommiers Voisins LFPK.

As part of the **55th International Paris Air Show**, an airspace plan is implemented. It includes a Temporary Prohibited Area (ZIT) and 3 Temporary Restricted Areas ("ZRT BLEUE", "ZRT ORANGE" and "ZRT PARA"), and conditions for using the airspace, and some airfields, that must be complied with.

The entire plan, including the characteristics of the ZIT and ZRT, the conditions to enter these temporary areas, the conditions for using the airspace and their consequences on the use of some airfields, and on the practice of aeronautical activities within these areas, is described below :

1. AIRSPACE PLAN

GENERAL VIEW



Excerpt from 1 : 250 000 Paris Region SIA chart 2-2024 edition

1.1 ZIT ROUGE, ZRT BLEUE

	ZIT ROUGE	ZRT BLEUE
Dates and times of activity	Can be activated : from WED 11 JUN to FRI 13 JUN : 0730 – 1530. Active : from MON 16 JUN to SUN 22 JUN : 0530 – 1730.	
Lateral limits	Circle radius 8.1 NM centered at Paris Le Bourget "parc des expositions" : 48°56'37"N, 002°25'51"E	49°06'36"N, 002°41'48"E - 48°59'38"N, 002°50'29"E - 48°57'36"N, 002°50'18"E - anti clockwise arc of a circle radius 2.00 Nm centred at 48°55'37"N, 002°50'02"E - 48°51'21"N, 002°50'18"E - 48°41'55"N, 002°37'08"E - 48°37'08"N, 002°29'20"E - 48°34'17"N, 002°22'15"E - 48°34'15"N, 002°16'05"E - 48°36'34"N, 002°07'17"E - 48°39'40"N, 002°06'57"E - 48°42'30"N, 002°09'57"E - 48°43'45"N, 002°09'35"E - 48°45'20"N, 002°09'06"E - 48°45'53"N, 002°08'57"E - 48°45'30"N, 002°07'02"E - 48°45'42"N, 002°04'50"E - 48°47'13"N, 002°04'50"E - 48°47'50"N, 002°05'22"E - 48°48'35"N, 002°06'02"E - 48°54'40"N, 002°04'40"E - 48°59'25"N, 002°00'02"E - 49°07'16"N, 002°11'50"E - 49°10'25"N, 002°29'49"E - 49°06'36"N, 002°41'48"E
Vertical limits	SFC / FL080	
Airspace exclusions	LF-P 23	Excluding : - LF-P 21, P 23, P 25, P 47, P 65, P 82 and LF-P 226 L (see AIP ENR 5.1) ; - LF-R 84 A and B, R 113 and R 333 (see AIP ENR 5.1) ; - ZIT ROUGE ; - ZRT PARA when active.

		Entry is possible in :	
		ZIT ROUGE	ZRT BLEUE
Entry conditions	ACTIVITY 1 : French Defense, customs, police, gendarmerie and public safety ACFT flying as part of their missions	YES	YES
	ACTIVITY 2 : Hospital flights, search and rescue flights, aircraft flying in the area for technical and safety reasons	YES	YES
	ACTIVITY 3 : IFR GAT going to or departing from DE GAULLE, ORLY, PARIS-SACLAY-VERSAILLES, PONTOISE, BEAUVAIS and VILLACOUBLAY	YES for commercial activities only. Private IFR flights or training are not allowed.	YES
	ACTIVITY 4 : IFR GAT going to or departing from LE BOURGET	YES	YES
	ACTIVITY 5 : VFR GAT going to or departing from Issy-les-Moulineaux heliport and included in the lists of authorized flights (except flights connecting with LE BOURGET - see ACTIVITY 6)	NO except for flights going to or departing from Issy-les-Moulineaux via IH3 - Porte de Bercy - Mont d'Est	YES
	ACTIVITY 6 : GAT VFR, going to or departing from LE BOURGET	YES	YES
	ACTIVITY 7 : GAT/VFR departing from or going to Orly or Lognes (except flights connecting with LE BOURGET - see ACTIVITY 6)	NO	YES
	ACTIVITY 8 : Unmanned ACFT	NO Except with authorization of C2A2.	YES According to the usual rules.

	ZIT ROUGE	ZRT BLEUE										
Entry conditions (continued from page 2)	Security measures for all flights : Comply with the provisions of paragraphs 2 and 6 of this AIP SUP and with the AIC FRANCE about the 2025 Paris International Air Show (SIAE) available at : www.sia.aviation-civile.gouv.fr											
	For activities allowed in ZIT ROUGE / ZRT BLEUE : 1. IFR GAT / OAT I : <ul style="list-style-type: none">departure or destination LFPB (Le Bourget) : ACCREDITATION FROM « PREFECTURE » IS MANDATORYAir traffic flow regulations, which could go as far as flight suspensions, may be implemented by military authorities. 2. VFR GAT / OAT V : <ul style="list-style-type: none">in ZIT ROUGE : ACCREDITATION FROM « PREFECTURE » and filing a FLIGHT INTENTION MANDATORYin ZRT BLEUE : filing a FLIGHT INTENTION is MANDATORYTransiting is prohibited. Only flights going to or departing from LFPB, LFPI and LFPL are allowed.See special provisions on paragraphs 2, 3, 4 and 5.Entering in ZIT ROUGE/ZRT BLEUE is possible only after radio contact with the applicable ATS unit and squawk of the 3/A transponder code given by C2A2, 3 minutes before the specified ZRT entry points. Radio contact mandatory throughout the flight in ZRT BLEUE.VFR activities may be suspended without prior notice by MIL authorities.											
	Mode A and C transponder mandatory (mode 3/A code).											
	Airspace users are invited to consult every day the additional or modification NOTAM that may be published.											
Status	When active, “ZIT ROUGE” coexists with Paris CTR and replaces the portions of Paris TMA and Restricted Areas with which it overlaps.	When active, ZRT BLEUE coexists with the portions of controlled airspace and replaces the portions of Restricted Areas with which it overlaps (except the excluded airspace).										
Services provided	The air traffic services provided are those of class D airspace and are provided by the usual ATC units.	The air traffic services of the class of the portions of controlled airspace with which ZRT BLEUE overlaps, are provided by the usual ATC units.										
Managing Authorities	CINQ MARS LA PILE CRC : phone : +33(0)2.45.34.15.67 or back up CRC.											
Users information	Actual activity known from the usual ATC units (Le Bourget, Orly, De Gaulle, Issy les Moulineaux, Lognes, Villacoublay), and Paris Info, Seine Info, Raki Info (or back up CRC announced by NOTAM). Activity provided by : <table><tr><td>- LE BOURGET ATIS</td><td>120.000 MHz</td></tr><tr><td>- RAKI INFO</td><td>143.550 MHz or 317.500 MHz (or back up CRC)</td></tr><tr><td>- Surveillance Paris</td><td>120.075 MHz</td></tr><tr><td>- PARIS INFO</td><td>125.700 MHz, 126.100 MHz or 129.625 MHz</td></tr><tr><td>- SEINE INFO</td><td>118.050 MHz, 120.325 MHz, 134.300 MHz or 134.875 MHz</td></tr></table>		- LE BOURGET ATIS	120.000 MHz	- RAKI INFO	143.550 MHz or 317.500 MHz (or back up CRC)	- Surveillance Paris	120.075 MHz	- PARIS INFO	125.700 MHz, 126.100 MHz or 129.625 MHz	- SEINE INFO	118.050 MHz, 120.325 MHz, 134.300 MHz or 134.875 MHz
- LE BOURGET ATIS	120.000 MHz											
- RAKI INFO	143.550 MHz or 317.500 MHz (or back up CRC)											
- Surveillance Paris	120.075 MHz											
- PARIS INFO	125.700 MHz, 126.100 MHz or 129.625 MHz											
- SEINE INFO	118.050 MHz, 120.325 MHz, 134.300 MHz or 134.875 MHz											
Suspended activities	All activities (with or without winching) including model aircraft flying, aerial work operations (VFR or IFR), aerobatics, parachute dropping, gliding and power gliding, paragliders (whether powered or not), ULM without transponder (mode 3/A and C), gyroplane, hang glider, airship, balloon (free or captive balloon), release of lanterns, rockets, and any other flying craft (whether powered or not) with or without persons on board (drones) are prohibited during the activity time slots, except those who are part of APPENDIX X of this AIP SUP or with a specific authorization from MIL authorities (CDAOA) (Air Defence and Air Operation Command). The activity at Enghien and Chelles airfields is suspended.											

1.2. ZRT ORANGE, ZRT PARA

	ZRT ORANGE (rehearsal activity for the Paris International Air Show SIAE)	ZRT PARA (parachuting activity as part of Paris International Air Show SIAE)
Dates and times of activation	Can be activated : MON 09 to SUN 15 JUNE : 0700-1600 ZRT ORANGE active only for rehearsal flights <u>and</u> when ZIT ROUGE + ZRT BLEUE <u>not active</u> .	Can be activated : WED 11 to SUN 15 JUNE : 1130-1530 Can be activated : FRI 20 to SUN 22 JUNE : 1130 - 1530
Users information	Actual activity known from the usual ATC units (Le Bourget, De Gaulle). Activity announced by : ATIS LE BOURGET 120.000 MHz	
Laterals limits	48°59'15"N, 002°23'36"E 48°59'29"N, 002°27'23"E 48°55'41"N, 002°24'44"E 48°55'12"N, 002°21'44"E 48°56'38"N, 002°21'45"E 48°59'15"N, 002°23'36"E	Circle radius 2 NM centred at : 48°57'02"N, 002°25'50"E
Vertical limits	SFC / FL080	SFC / FL080
Entry conditions	GAT / OAT : compulsory avoidance except for ACFT cleared by DE GAULLE APP or LE BOURGET TWR.	GAT / OAT : compulsory avoidance except for ACFT cleared by DE GAULLE APP or LE BOURGET TWR.
Status and services provided	When active, this ZRT replaces the portions of controlled airspace and Restricted Areas with which it overlaps. The air traffic services provided are those of class D airspace and are provided by the usual ATC units.	When active, this ZRT replaces the portions of controlled airspace and Restricted Areas with which it overlaps. The air traffic services provided are those of class D airspace and are provided by the usual ATC units.
Managing authority	LE BOURGET TWR	

2. VISUAL PROCEDURES FOR ENTERING AND FLYING IN ZIT ROUGE / ZRT BLEUE

ATTENTION : also read the AIC FRANCE about the specific aviation safety measures in relation with the Paris International Air Show (SIAE) available at : www.sia.aviation-civile.gouv.fr

2.1 ENTRY AND EXIT POINTS FOR “ZRT BLEUE”

In addition to the points described in the 1 : 250 000 Paris region SIA chart, the 1 :100 000 « Itinéraires Hélicoptères CTR Paris » SIA chart and AIP France VAC AD 2 LFPB, the following points have been created to enter and exit ZRT BLEUE :

NAME	IDENTIFICATION	COORDINATES	CHARACTERISTICS	ATS UNITS
TRIEL	Intersection between the southern tip of Pontoise CTR, Paris TMA 2 and Le Bourget TMA	48°59'25"N, 002°00'02"E 1500FT AMSL (see note 1 below)	ZRT entry/exit for Le Bourget	PONTOISE TWR 121.200 MHz. <i>Outside Pontoise ATS hours:</i> Entry: LE BOURGET VFR 135.700 MHz Exit: PONTOISE A/A 121.200 MHz
L'ISLE ADAM	Farthest north point of intersection between Paris TMA 2 and Pontoise CTR	49°07'16"N, 002°11'50"E	ZRT entry/exit for Le Bourget	PONTOISE TWR: 121.200 MHz. <i>Outside Pontoise ATS times:</i> Entry: LE BOURGET VFR 135.700 MHz Exit: PONTOISE A/A 121.200 MHz
SE	Interchange on A4 highway	48°50'26"N, 002°48'58"E	ZRT entry/exit for aircraft serving Le Bourget	LOGNES TWR: 118.600 MHz. <i>Outside Lognes ATS times:</i> LE BOURGET VFR 135.700 MHz
			ZRT entry for Lognes. ZRT entry to fly to the MONT D'EST reporting point.	LOGNES TWR: 118.600 MHz. <i>Outside Lognes ATS times:</i> LE BOURGET VFR 135.700 MHz before arriving at SE, then LOGNES A/A 118.600 MHz
			ZRT exit after MONT D'EST	LOGNES (TWR or A/A): 118.600 MHz
S	Northern end of Armainvilliers lake	48°45'58"N, 002°44'28"E	ZRT exit from Lognes	LOGNES (TWR or A/A): 118.600 MHz
CHANTILLY	« 4 Tours Blanches »	49°11'00"N, 002°27'42"E	ZRT entry/exit to fly to the LUZARCHES reporting point.	Paris Surveillance: 120.075 MHz

NOTE 1 : entering and exiting via point TRIEL is recommended at the altitude of 1500 ft AMSL, in order to avoid Les Mureaux aerodrome traffic (traffic pattern at 1100 ft AMSL)

NOTE 2 : The *Rocquencourt*, *WH1 Versailles Marchandises*, *WH5 Christ de Saclay*, *OH4 Briis sous Forges* and *OH3 Croix de Villeroi* reporting points remain entry points for ZRT BLEUE available for helicopters.

Contact the ATS unit three minutes before the ZRT BLEUE entry point, indicating the same information as that needed to file a flight intention (see paragraph 6.3) as well as position, heading and altitude.

Display the 3/A transponder code provided by C2A2 when filing the flight intention (see paragraph 6.3). For ACFT departing from or bound for Lognes, please refer to paragraph 5.2.

2.2. AIRPLANES (see “1 :250 000 Région Parisienne” SIA chart and AIP France VAC AD 2 LFPL and LFPO)

For aircraft outbound from or bound for the following airfields, refer to the corresponding paragraphs :

- Paris le Bourget : paragraph 3
- Orly (VFR) : paragraph 5.1
- Lognes : paragraph 5.2

2.3 HÉLICOPTERS

Helicopters must squawk the transponder code provided by C2A2 when the flight intention was filed (see paragraph 6.3).

The use of helicopter routes located in Paris CTR is restricted to flights outbound from or bound for one of the airfields/heliports located in this CTR.

Unless otherwise mentioned, the helicopter routes located in Paris CTR should be use in accordance with the charts in APPENDIXES II to IX of this AIP SUP and at the altitude indicated on the 1 : 100 000 "Paris CTR helicopter routes" SIA chart.

The "TRAJET NORD" route : LUZARCHES – ILE ST DENIS is not available except for flights departing from or going to Paris le Bourget LFPB via BH3.

During the air show time slots (see paragraph 3.1.1.1 and APPENDIX IV of this AIP SUP),

- the portion of route AULNAY - BH2 - BH4 - ILE ST DENIS is not available,
- the route between Paris-Le-Bourget airfield and Paris-Issy-les-Moulineaux airfield remains available in both directions: BH1 - AULNAY - ROSNY - PORTE DE BAGNOLET – PORTE DE BERCY - GENTILLY - ISSY-LES-MOULINEAUX (see chart in APPENDIX IV of this AIP SUP).

Out of the time slots described in paragraph 3.1 of this AIP SUP, a traffic circle will be implemented between Paris-Le-Bourget (LFPB) airfield and Paris-Issy-les-Moulineaux (LFPI) airfield in accordance with the following provisions :

- From **LFPB to LFPI** : LFPB - BH2 - BH4 - ILE ST DENIS - PONT D'ASNIERES - IH1 - IH2 – LFPI (see chart in APPENDIX III)

Note: with ATC clearance, helicopter traffic may be redirected to : BH2 - ROSNY - PORTE DE BAGNOLET - PORTE DE BERCY - GENTILLY – LFPI

- From **LFPI to LFPB** : LFPI - GENTILLY – PORTE DE BERCY - PORTE DE BAGNOLET - ROSNY - AULNAY - BH1 – LFPB (see chart in APPENDIX III).

2.3.1 For arrivals :

Before the MONT D'EST and GARE DE VAIRES reporting points, mandatory radio contact 3 minutes before flying over the SE point.
Radio contact :

- On LOGNES TWR frequency (118.600 MHz);
- Out of LOGNES ATS hours :
 - to enter ZRT BLEUE, contact LE BOURGET VFR (135.700 MHz) 3 minutes before SE, then self-information on LOGNES A/A (118.600 MHz) for ACFT flying to MONT D'EST.
 - To exit ZRT BLEUE from GARE DE VAIRES and MONT D'EST, self-information on LOGNES A/A (118.600 MHz)

Before the HERBLAY reporting point, mandatory radio contact 3 minutes before flying over points L'ISLE ADAM or TRIEL. Radio contact :

- On PONTOISE TWR frequency (121.200 MHz);
- Out of Pontoise ATS hours :
 - To enter ZRT BLEUE, contact LE BOURGET VFR (135.700 MHz);
 - To exit ZRT BLEUE from HERBLAY, self-information on PONTOISE TWR (121.200 MHz).

Before the LUZARCHES reporting point, mandatory radio report 3 minutes before flying over point CHANTILLY, on the Paris Surveillance frequency (120.075 MHz).

For arrivals via ROCQUENCOURT, WH1 VERSAILLES MARCHANDISES, WH5 CHRIST DE SACLAY, OH4 BRIIS SUR FORGES and OH3 CROIX DE VILLEROY : radio contact with the applicable ATS unit 3 minutes before the ZRT BLEUE entry point.

2.3.2 For departures :

The LUZARCHES reporting point will be followed by a mandatory report at the CHANTILLY point, on the Paris Surveillance frequency (120.075 MHz).

When leaving the ZRT, aircraft must fly over one of the permanent or temporary reporting points specifically created.

3. SPECIFIC PROVISIONS AT PARIS LE BOURGET AD (LFPB)

(valid from 11 to 22 June included)

Do not fly over the public area under any circumstances.

3.1 PARTICULAR PROVISIONS FOR AIRPLANES

3.1.1. Activities restrictions:

3.1.1.1. Provisional time slots for the suspension of all airplane activity:

From 11 to 19 June : 1130 – 1430.

From 20 to 22 June : 1030 – 1530.

These time slots will be confirmed by NOTAM on the day before and announced on ATIS LE BOURGET 120.000 MHz.

3.1.1.2. Provisional time slots for airplane activity restrictions :

30 minutes on either side of the above-mentioned time slots for suspension. This will be confirmed by NOTAM on the day before.

3.1.2. Special provisions:

3.1.2.1. Activity restriction (see chart Appendix I)

- Paris le Bourget aerodrome is prohibited for ACFT with a wingspan of over 52 metres except if involved in a mission for Le Bourget "SIAE"
- There will be variable conditions for aircraft traffic in the southern part of the airfield : taxiways C, C1 and C11 will be downgraded to apron at certain hours. When these taxiways become apron, a particular marking will be visible throughout the area (flag erected south of the intersection of C1/VL2 and "NO ATC SERVICES" signs at the entrance to the area on V2, C and C1). The ground movement rules for this area are under the responsibility of "SIAE dedicated vigie trafic" (call sign : "TRAFIC", FREQ : 122.475 MHz). When this area is not downgraded to apron, a new TWY called V1 will be available in the West of parking stands G1 and G2; this TWY can be used by ACFT with a wingspan of less than 36 m.
- The available departure and arrival time slots will be limited at certain times of the day, their number could be smaller than number of slots requested.
- Paris Le Bourget airfield shall not be used as an alternate airfield during the time slots when ZIT ROUGE, ZRT BLEUE and ZRT ORANGE are active (see paragraphs 1.1 and 1.2 of this AIP SUP).
- Paris Le Bourget airfield cannot be used during the time slots defined above, except for assistance, rescue or public safety flights when avoidance of the area is not compatible with their mission. MEDEVAC (hospital) flights are not allowed during these time slots.
- VFR operations are only allowed for aircraft with a maximum take-off weight of 20 tons or less, flying at an IAS of 200 kt or less.
- Only the aircraft involved in the Paris International Air Show and those of based airlines may park at Paris Le Bourget airfield. ULM are prohibited.
- Air traffic regulation measures must be complied with (PPR) (see AIP VAC AD 2 LFPB TXT 01).
- Beware of dense helicopter traffic between reporting point ECHO 2 and Le Bourget airfield.

3.1.2.2. Additional provisions for airplane visual arrivals and departures

For authorized planes bound for Le Bourget, the visual arrival and departure procedures are modified : compulsory squawk of the transponder code provided by C2A2 when the flight intention was filed (see chapter 6.3).

See "GENERAL VIEW" on page 1 :

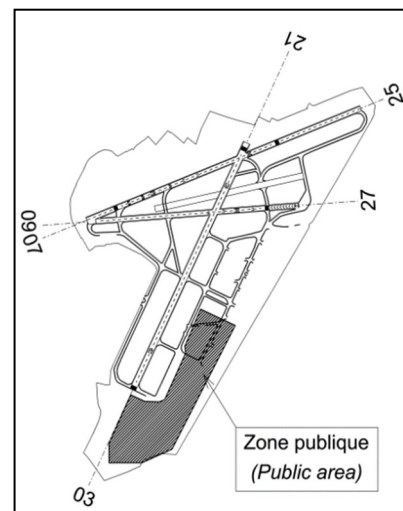
3.1.2.2.1. For arrivals :

- Reporting point W1 will be preceded by a compulsory report at points L'ISLE ADAM or TRIEL : radio contact with PONTOISE TWR (121.200 MHz) 3 minutes before flying over L'ISLE ADAM or TRIEL, as well as clearance from LE BOURGET VFR (135.700 MHz) 5 minutes before flying over W1 to proceed towards the airfield.

Out of Pontoise ATS hours, contact LE BOURGET VFR (135.700 MHz) 3 minutes before flying over L'ISLE ADAM or TRIEL.

- Point E1 will be preceded by a compulsory report at point SE : radio contact with LOGNES TWR (118.600 MHz) 3 minutes before SE, as well as authorization from LE BOURGET VFR (135.700 MHz) 5 minutes before flying over E1 to proceed towards the airfield.

Out of Lognes ATS hours, contact LE BOURGET VFR (135.700 MHz) 3 minutes before SE.



- If weather conditions do not allow flying at the prescribed altitudes, pilots may get a clearance to follow routes at an altitude enabling them to remain in view of the ground; this altitude will always be at least 1300 ft AMSL.

3.1.2.2.2. For departures :

- Point W1 will mandatorily be followed by L'ISLE ADAM or TRIEL : pilots announce themselves on PONTOISE TWR (121.200 MHz) after passing W1, released by LE BOURGET TWR (118.925 MHz) or LE BOURGET VFR (135.700 MHz), towards L'ISLE ADAM or TRIEL.
- Point E1 will mandatorily be followed by SE : pilots announce themselves on LOGNES TWR (118.600 MHz) after passing E1, released by LE BOURGET TWR (118.925 MHz) or LE BOURGET VFR (135.700 MHz), towards SE point.
Out of Lognes ATS hours, pilots announce themselves on LE BOURGET VFR (135.700 MHz) after passing E1, towards SE.

Note: Points W1, W2, E1 and E2 are defined in AIP France VAC, AD 2 LFPB.

3.2 PARTICULAR PROVISIONS FOR HELICOPTERS

3.2.1 Creation of a temporary heliport at Paris Le Bourget AD (see APPENDIX IX)

The ground infrastructure is permanently modified but the heliport can only be used during the following time slots:

- From 11 to 15 June included : 0800-1330
- From 16 to 22 June included : 0500-1700

Stands Y1 and Y2 are dedicated to State services. (Y1 GTA stand and Y2 MASA stand).

The transportation of passengers or crews in the airside area from or to these aprons is coordinated locally.

All helicopter traffic is directed towards this temporary heliport during flight presentation slots (see appendices V to IX : site chart, departure and arrival patterns, parking stands and taxiways detailed chart).

The heliport includes two one-off FATOs ("TLOF H1" and "TLOF H2") which can be operated by performance classes 2 and 3 helicopters certified in categories A and B.

During take-off (H2 facing west) and landing maneuvers (H1 facing east), do not overshoot the extension of taxiway B in the west.

The helicopter parking stands are indicated on the ground by identification markings (see APPENDIX IX).

Special instructions of use for single-engine helicopters :

- Inbound facing east towards "H1", maintain 1000 ft AMSL (800 ft AGL) until the west edge of Road D317.
- Outbound facing west from "H2", quickly climb up to 1000 ft AMSL (800 ft AGL).

3.2.2 Radio contact

Contact LE BOURGET VFR 135.700 MHz 5 minutes before start up for outbound flights and 3 minutes before the first reporting point (RH2, GARE DE VAIRES, ROSNY or PORTE DE BAGNOLET, BH3, GENEVILLIERS, PONT D'ASNIERES) for inbound flights.

3.2.3 Routes

In addition to the provisions defined in above paragraph 3.2.2, clearance for departure may be given on the following routes:

- LFPB - BH3 - ILE ST DENIS - PONT D'ASNIERES - IH1
- LFPB - BH3 - LUZARCHES

3.3 FREQUENCIES

All aircraft using Paris Le Bourget airfield must be equipped with a 760-channel VHF transceiver minimum.

In addition to the frequencies published in the AIP, the following frequency will be used :

- LE BOURGET VFR : 135.700 MHz

4. SPECIFIC PROVISIONS FOR PARIS ISSY LES MOULINEAUX (LFPI) HELIPORT

Airspace users planning a flight departing from or going to Paris Issy-les-Moulineaux heliport must comply with the provisions of paragraph 6 (especially 6.4) and APPENDIX X.

For connection flights with Paris le Bourget (flight planned on the day before, control procedures of departures), filing a flight plan is not mandatory, but a flight intention must be filed with the C2A2 in accordance with the provisions of paragraph 6.3.

Modification of helicopter transit routes and departure / arrival procedure at Le Bourget LFPB : see paragraph 2.3 above.

Helicopters must use the routes located out of ZIT ROUGE for departure from and arrival at ISSY heliport, except :

- connection flights between LE BOURGET and ISSY LES MOULINEAUX
- route IH3 - PORTE DE BERCY - JOINVILLE - NOGENT - MONT D'EST

5. SPECIFIC PROVISIONS AT OTHER AIRFIELDS

5.1 PARIS ONLY (LFPO) : RESTRICTIONS :

The "CARREFOUR POMPADOUR – ORMESSON – VAIRES" route is closed (see AIP VAC AD 2 LFPO AD 2 APP 01).

5.2 LOGNES EMERAINVILLE (LFPL) :

When ZRT BLEUE is active, this airfield must be reached using the most direct routes according to paragraphs 2.1 and 2.3.1.

For traffic patterns and locally based aircraft, FPL is not mandatory.

A network of trust has been created at Lognes airfield, contact address is : reseaulfpl@gmail.com

Users wishing to fly to or from Lognes airfield must contact the network of trust and provide the following information :

- Type of aircraft
- Aircraft registration
- Departure aerodrome
- Arrival aerodrome
- Estimated take-off time
- Estimated time of arrival
- Type of flight : specify *traffic pattern* or *local flight* or *navigation flight* (precise the intermediate landing aerodrome)
- Captain's name and phone number

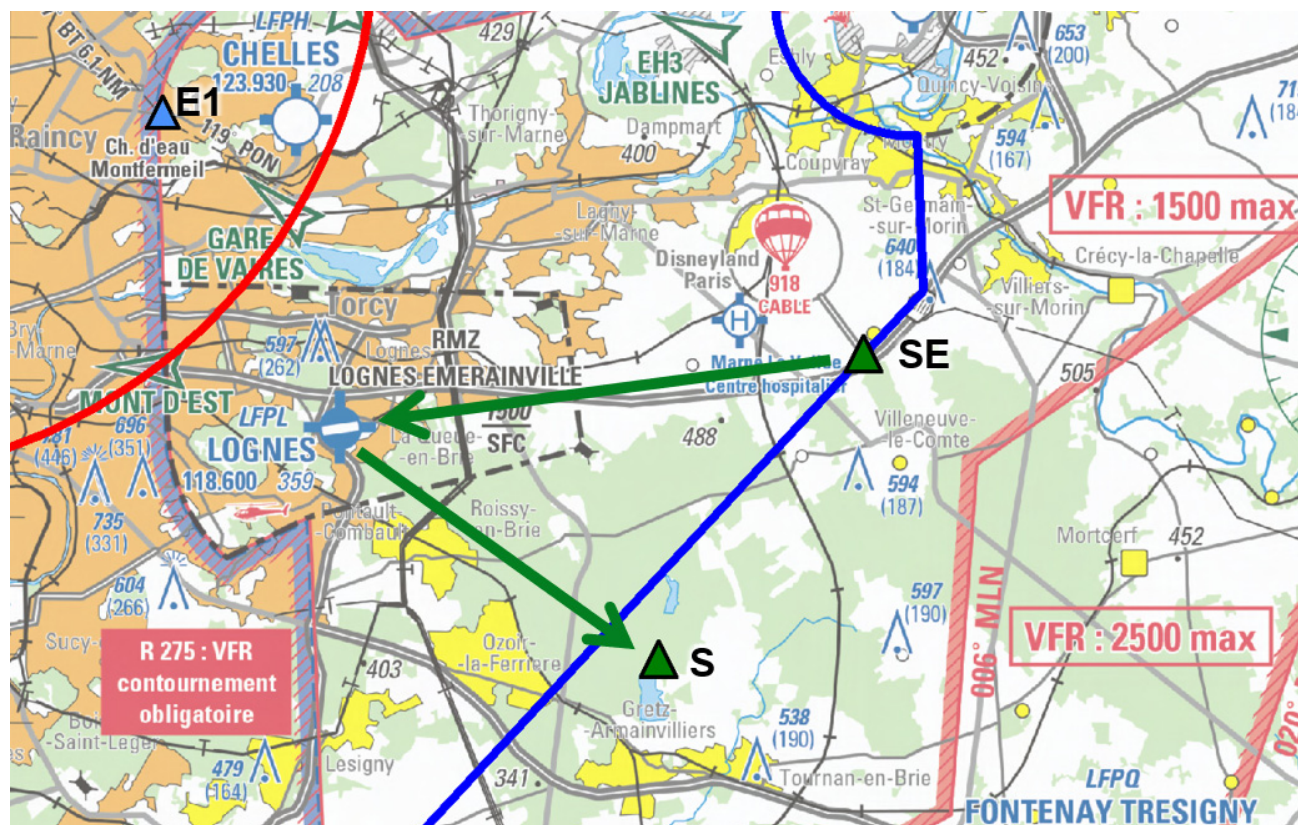
This information must be transmitted on the day before the flight before 1400 UTC.

In return the C2A2 will give an authorization number as well as a 3/A transponder code when the aerodrome is scheduled to be self-reporting. During ATS SKED, 3/A transponder code will be given by ATS at first contact.

A gauge system is implemented in order to limit the number of aircrafts in flight at the same time, this gauge system is defined in the AIC on aviation security measures specific to SIAE 2025.

Flights outbound from or bound for Lognes are authorized under the following conditions:

- Transponder code:
 - o Outside LOGNES ATS hours : display the code given by the C2A2.
 - o During LOGNES ATS hours : display the code provided by Lognes on departure and arrival.
- Arrivals : should announce themselves 3 minutes before SE on the airfield frequency 118.600 MHz (see paragraph 2.1).
Out of LOGNES ATS hours, contact LE BOURGET VFR (135.700 MHz) 3 minutes before SE, then self-information on LOGNES A/A (118.600 MHz).
- Departures : should head towards exit point S (see paragraph 2.1) on LOGNES TWR or A/A (118.600 MHz) frequency.



Excerpt from 1 : 250 000 Paris Region SIA chart 2-2024 edition

5.3 CHELLES LE PIN (LFPH) AND ENGHEN MOISSELLES (LFFE) :

Activity at these 2 aerodromes is suspended during the activation of ZRT BLEUE.

6. SECURITY MEASURES

Accreditation requests must be made starting from 06 May 2025 and at the latest 7 days before the flight. The applicable activities are listed in **APPENDIX X**.

Comply with the provisions published in the AIC about the specific aviation safety measures in relation with the Paris International Air Show (SIAE) 2025 available at : www.sia.aviation-civile.gouv.fr

Additional restrictions may be implemented by MIL authorities in real time for aviation security reasons.

Airspace users are invited to consult every day the additional or modification NOTAMs that may be published.

6.1 FLIGHT PLANS

Filing a FPL is mandatory for all flights in "ZIT ROUGE" or "ZRT BLEUE", except in special cases (see APPENDIX X) It must be sent to the usual addresses, and to LFXOYWYX, LFBWYWYX and LFXVYWYX).

6.2 PREFECTORAL ACCREDITATION

An accreditation must be requested for each pilot, co pilot and ACFT. The connection between pilots and ACFT (check of qualifications by the applicable Civil Aviation authorities) must be included in the ad hoc form.

It is the responsibility of the aircraft operators and concerned airlines managers to request this accreditation from the Prefecture in charge of the security and safety of the Paris airports, directly online at the following website:

<https://siaeaeronef.mybadgeonline.com/aeronef>

Prefectoral accreditation is required from 11 to 22 June included during ZIT Rouge and ZRT Bleue activation slots. Each accreditation remains valid throughout the SIAE air show.

The accreditation numbers must be mentioned in box 18 of the flight plan.

6.3 FLIGHT INTENTIONS – « CELLULE DE COORDINATION DE L'ACTIVITE AERIENNE » (C2A2)

For safety reasons and coordination with the SIAE air show activities, ACFT (piloted or not) authorized to fly inside ZRT BLEUE and ZIT ROUGE under VFR must file a flight intention with the "Aviation Activity Unit of Coordination" (C2A2) in accordance with the following provisions :

- in case of an activity with no accreditation required : by e-mail or phone to C2A2 as soon as possible, and before take off on the day of flight to get a 3/A transponder code
- in case of an accredited activity : by phone to C2A2 on the day before, before 1600 UTC for any change, and one hour before take off on the day of flight to get a 3/A transponder code
- in case of an unmanned aircraft, only those operating in ZIT Rouge must be subject of a flight intention filing.

In all cases, radio contact must be made with the ATS before start-up or 3 minutes before entering ZRT BLEUE, in order to confirm the information transmitted before, provide tracking and take possible changes into account. The 3/A transponder code transmitted by C2A2 must be displayed 3 minutes before entering ZIT ROUGE / ZRT BLEUE.

The following information must be transmitted :

- accreditation number (aircraft and pilot) for ACFT going to Le Bourget or who may fly in ZIT ROUGE (see paragraph 6.2 above)
- call sign, registration
- number and type of aircraft,
- ETD, estimated time over ZIT ROUGE / ZRT BLEUE and ETA
- Type of mission, goal, what are the VIP on board
- Handling company at Paris LFPB
- Phone number of pilot in command

The flight intention must be sent to : c2a2.siae.fct@def.gouv.fr

These flight intentions do not concern aircraft flying to or from Lognes aerodrome : comply with paragraph 5.2.

6.4 FLIGHT INTENTIONS FOR ISSY LES MOULINEAUX

In addition to C2A2, flight intentions must be sent to « Unité Exploitation » of LE BOURGET and to Paris Aéroport General Aviation who makes a daily list of the movement authorized at Issy-les-Moulineaux in accordance with the applicable quotas.

E-mail : environnementissy@adp.fr

7. ADDITIONAL ACTIVITIES

Combat aircraft refueling : activation of LF-TRA 8 B (axis Yvette), LF-TRA 200 A (axis Gisèle) or LF-TRA 10 A-B (axis Simone) possible.

Awacs : possible activation of LF-TRA 10 C or LF-TRA 8 B.

Combat aircraft holding over Paris : ZRT PO A and B - FL 205/FL225 (published by Sup AIP 223/24 and activated by NOTAM).

Unmanned aircraft : ZRTs defined in Sup AIP 091/24 may be activated.

8. RELEVANT AUTHORITIES CONTACT DETAILS

8.1 BEFORE 11 JUNE :

For any question relating to aviation security :

« Commandement de la Défense aérienne et des Opérations aériennes »
« Centre Air de Planification et de Conduite des Opérations Aériennes et de la Défense Aérienne »
Division DPSA
Base Aérienne 942 de Lyon Mont-Verdun
BP19
69579 LIMONEST CEDEX
Tél : +33(0)4.87. 65. 61. 38 ou +33(0)4.87. 65. 57. 35.
e-mail : c2a2.siae.fct@def.gouv.fr

For any questions about air traffic :

- FPL questions only :
BNIA Bordeaux
e-mail : bnia.bordeaux@aviation-civile.gouv.fr
Tél : +33(0)5.57.92.60.84

- other questions about air traffic :
« Service Circulation Aérienne Le Bourget » (Le Bourget ATS service)
e-mail : siae-question-ca-bf@aviation-civile.fr

8.2 FROM 11 JUNE ONWARDS :

For information and flight planning (flight intentions) and/or triggering emergency missions

C2A2 (PC Commun SALON du BOURGET)
e-mail : c2a2.siae.fct@def.gouv.fr
Phone : +33(0)6.11.43.88.68

For any information about the activation or activity of the temporary areas :

CINQ MARS LA PILE CRC phone : +33(0)2.45.34.15.67
Or replacement CRC (MONT DE MARSAN) : phone : +33(0)5.58.06.84.51

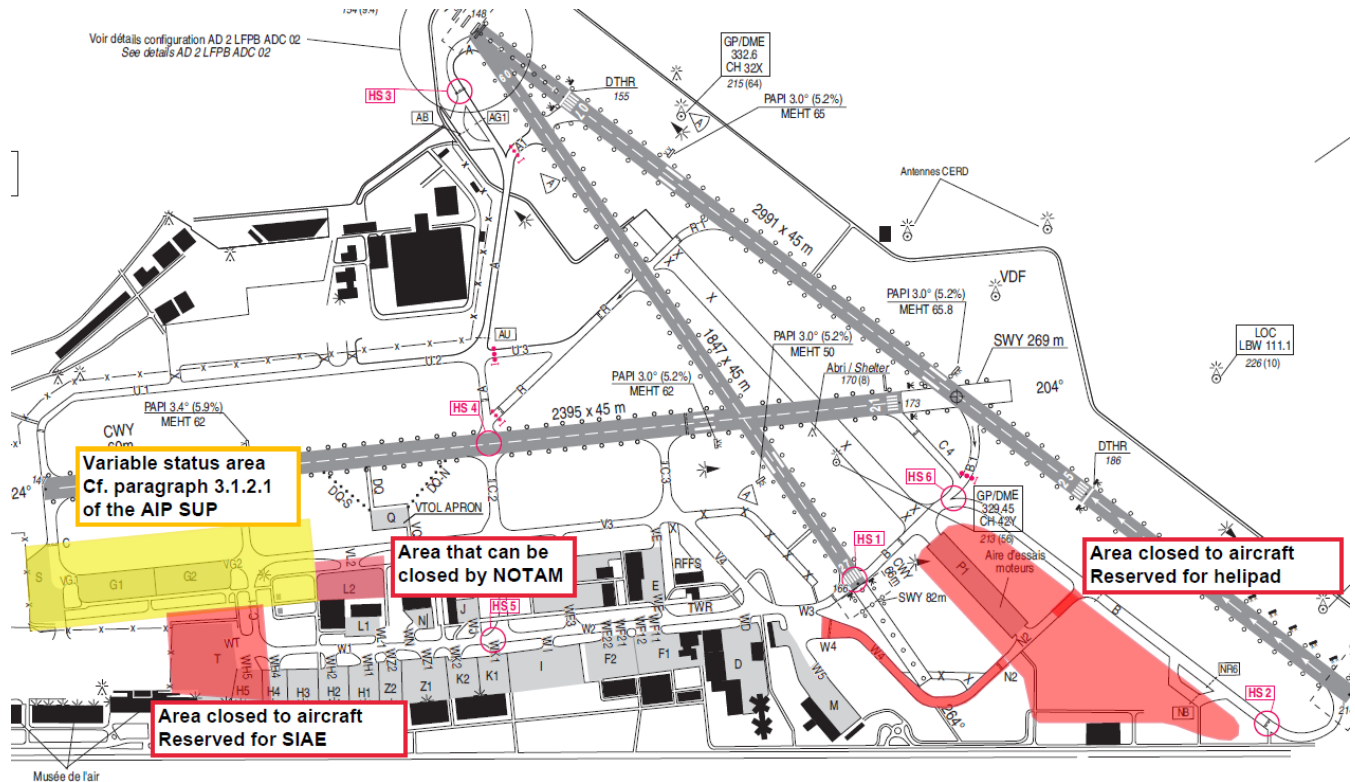
For any questions about air traffic :

- FPL questions only :
BNIA Bordeaux
e-mail : bnia.bordeaux@aviation-civile.gouv.fr
Phone : +33(0)5.57.92.60.84.

- other questions about air traffic :
« Service Circulation Aérienne Le Bourget » (Le Bourget ATS service)
e-mail : siae-question-ca-bf@aviation-civile.fr

APPENDIX I

SALON DU BOURGET 2025 - Restrictions and modifications of activity on LFPB

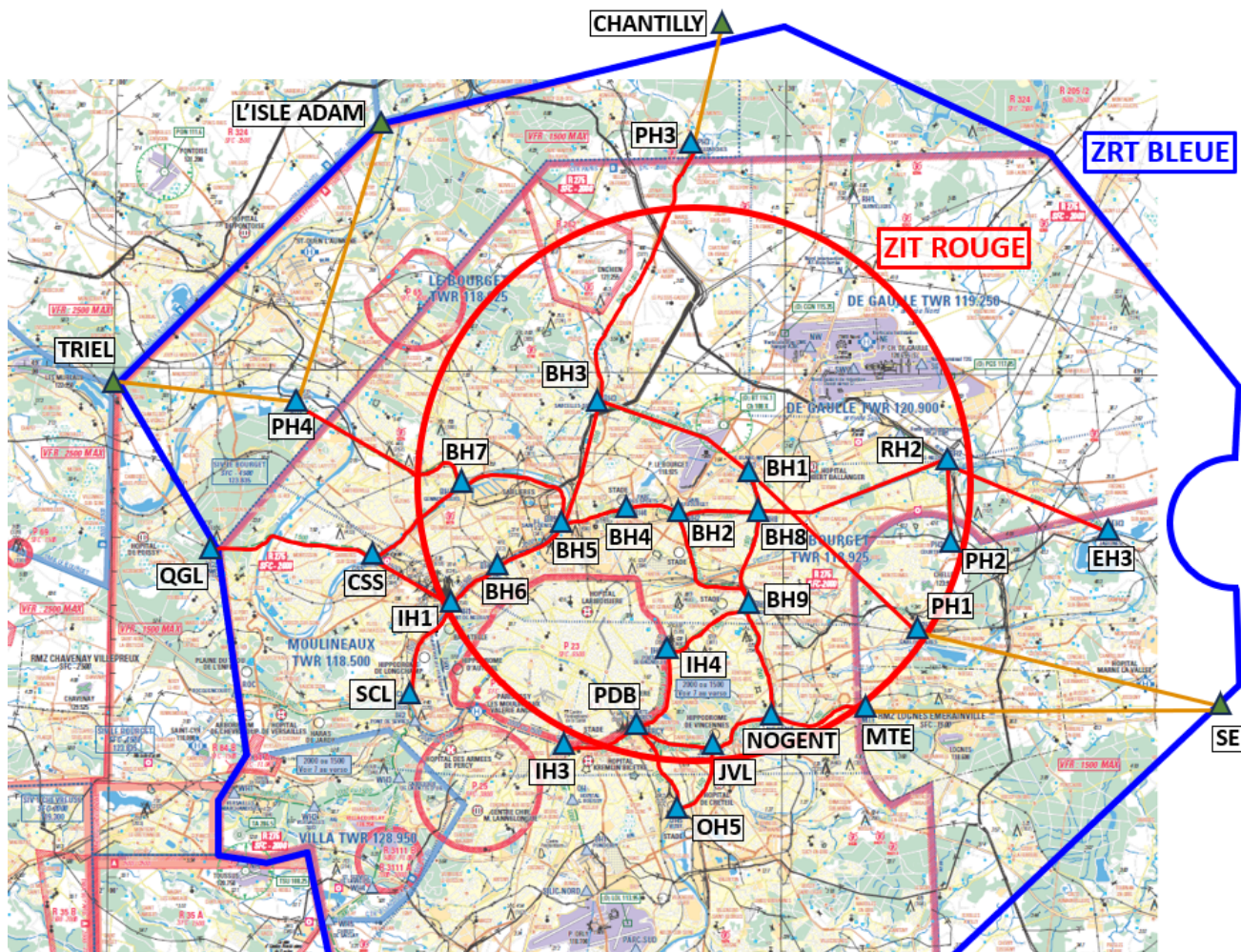


Background map 2024







APPENDIX II

SALON DU BOURGET 2025 - MODIFICATIONS OF HELICOPTER ROUTES

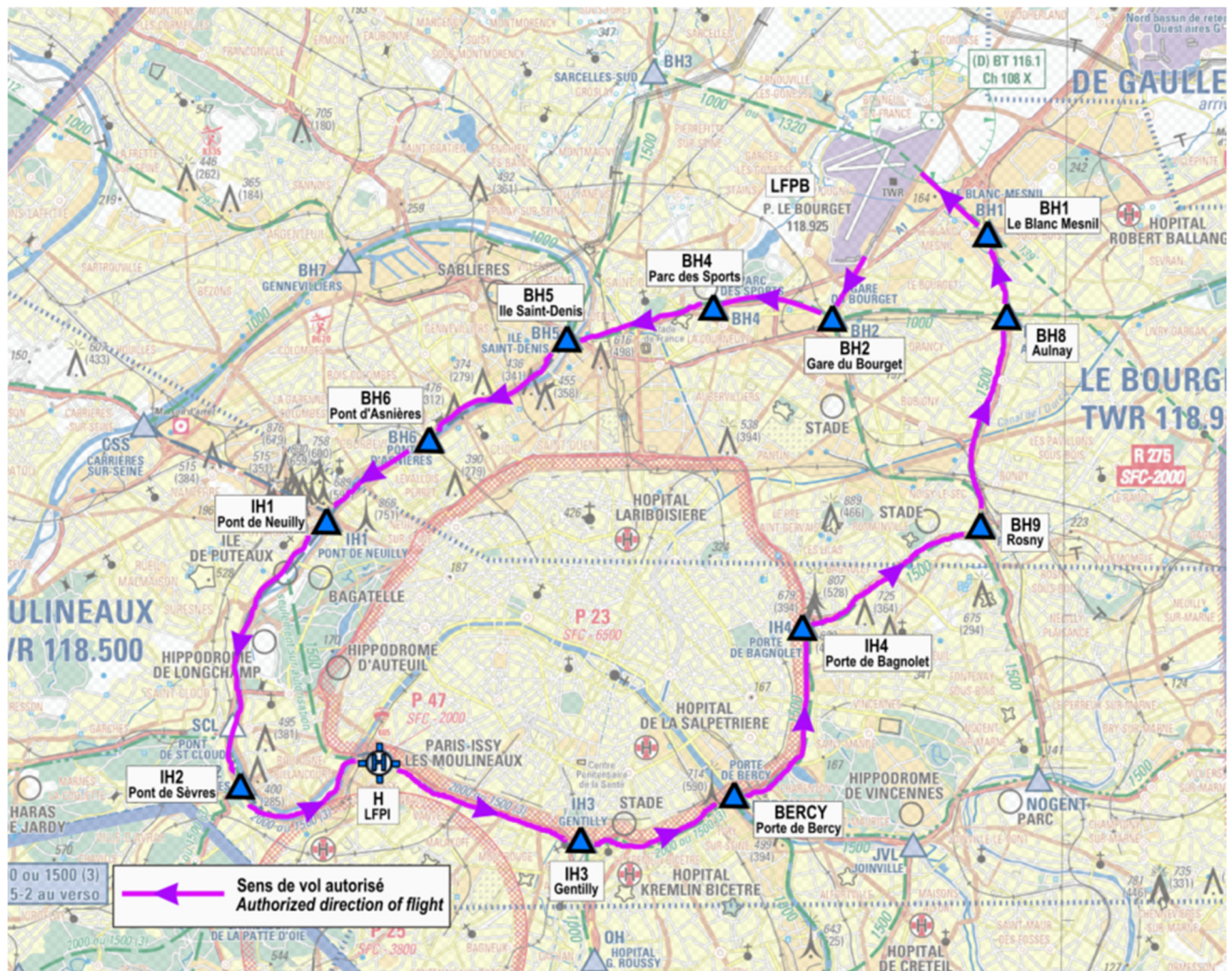
(ref 2025 CTR Paris helicopter routes chart)



Background map 2024

Legende / Legend	
	ZIT ROUGE
	Itinéraires fermés sauf activités 1, 2, 5 et 6
	Itinéraires complémentaires avec points de report obligatoires
	Point de report obligatoire créé
	Point de report déjà existant
	ZRT BLEUE
	Closed VFR routes except for activities 1, 2, 5 and 6
	Additional VFR routes with mandatory Reporting Points
	Created mandatory Reporting Point
	Existing Reporting Point

APPENDIX III

SALON DU BOURGET 2025 - HELICOPTER ROUTES OUT OF FLIGHT DISPLAY TIME SLOTS

Background map 2024

APPENDIX IV

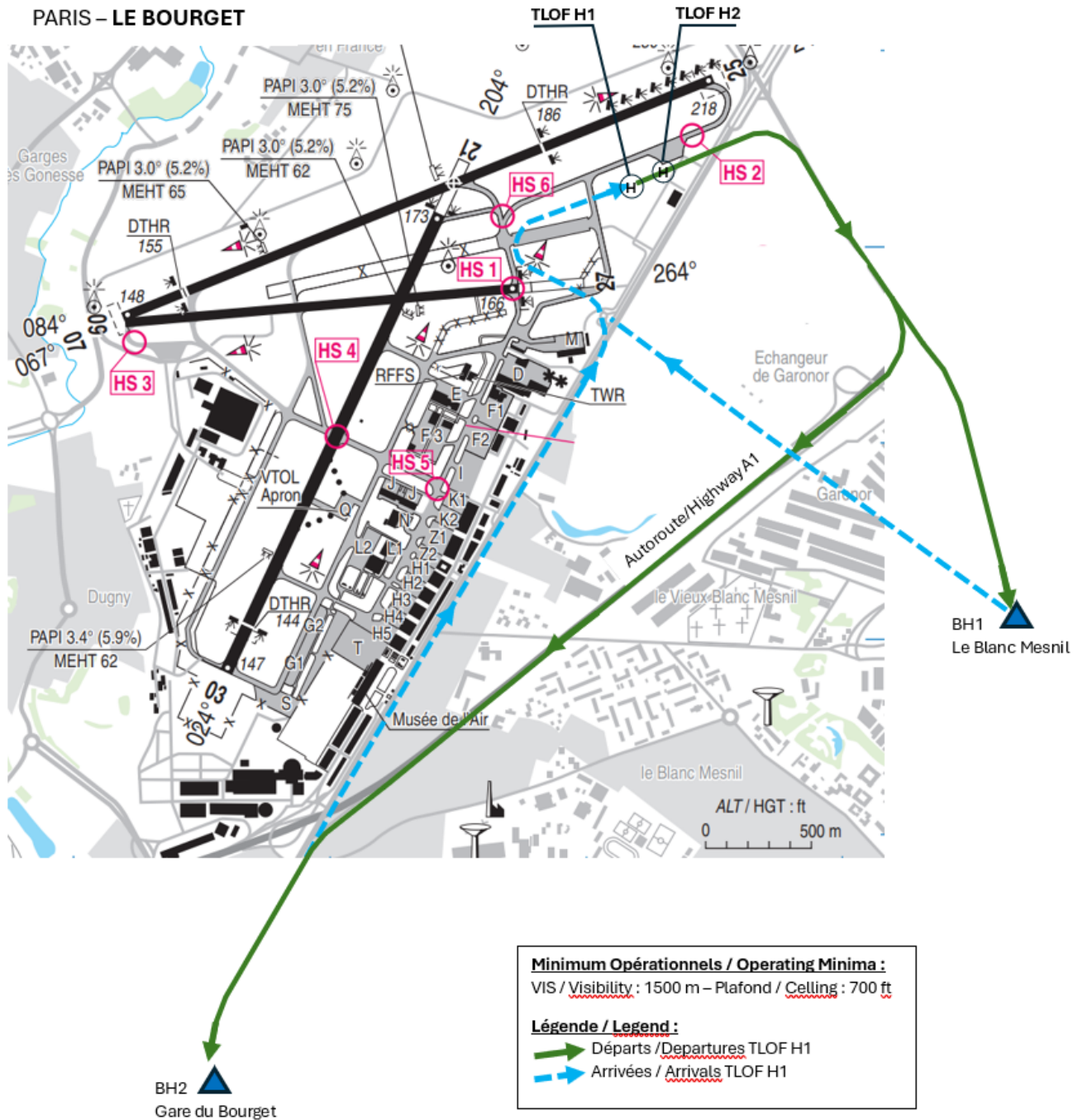
**SALON DU BOURGET 2025
HELICOPTER ROUTES DURING FLIGHT DISPLAY TIME SLOTS**



Background map 2024

APPENDIX V

SALON DU BOURGET 2025
HELISTOP AND LOCAL CIRCLING - HELICOPTER ARR/DEP FACING EAST



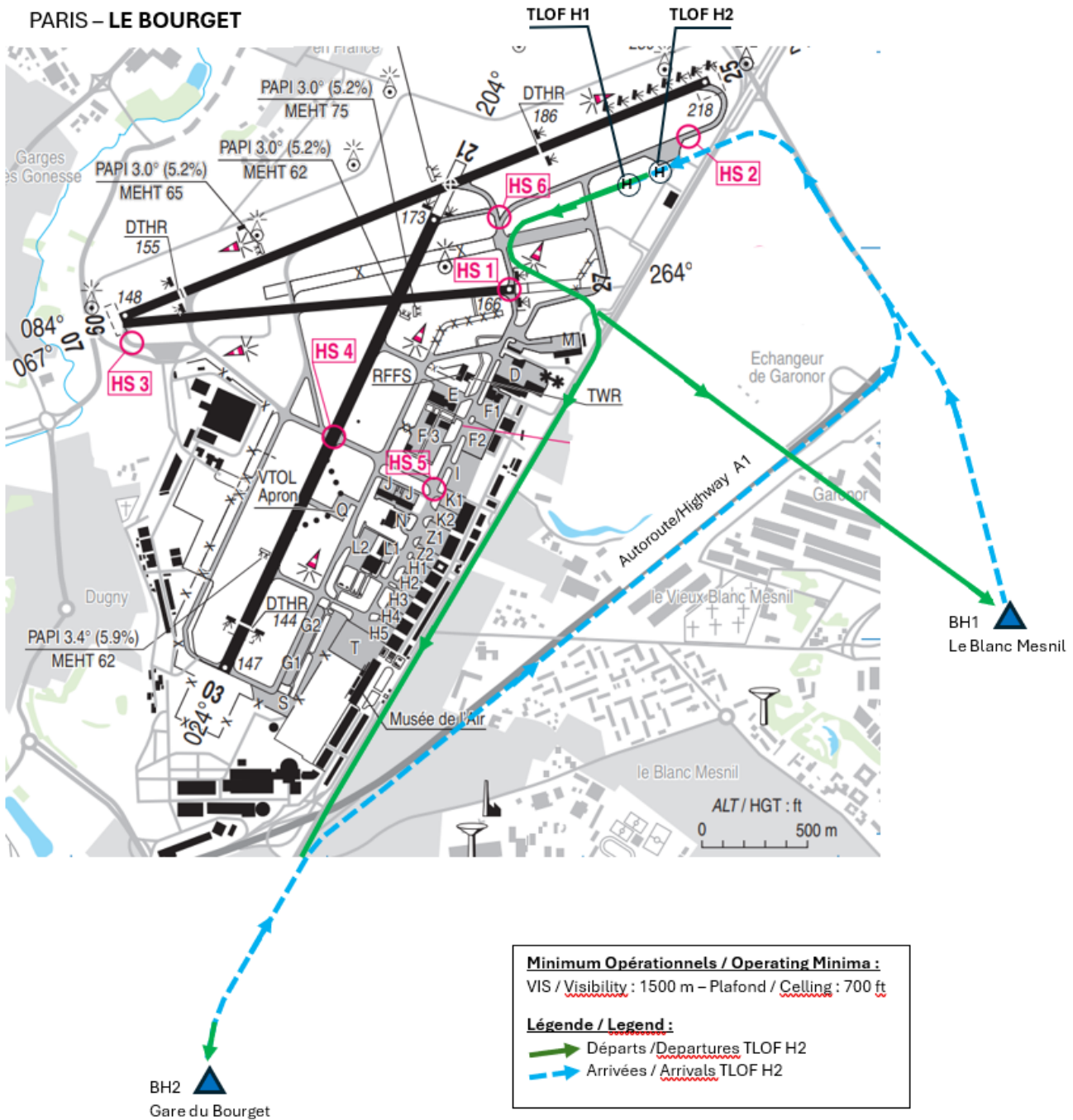
Background map 2024

APPENDIX VI

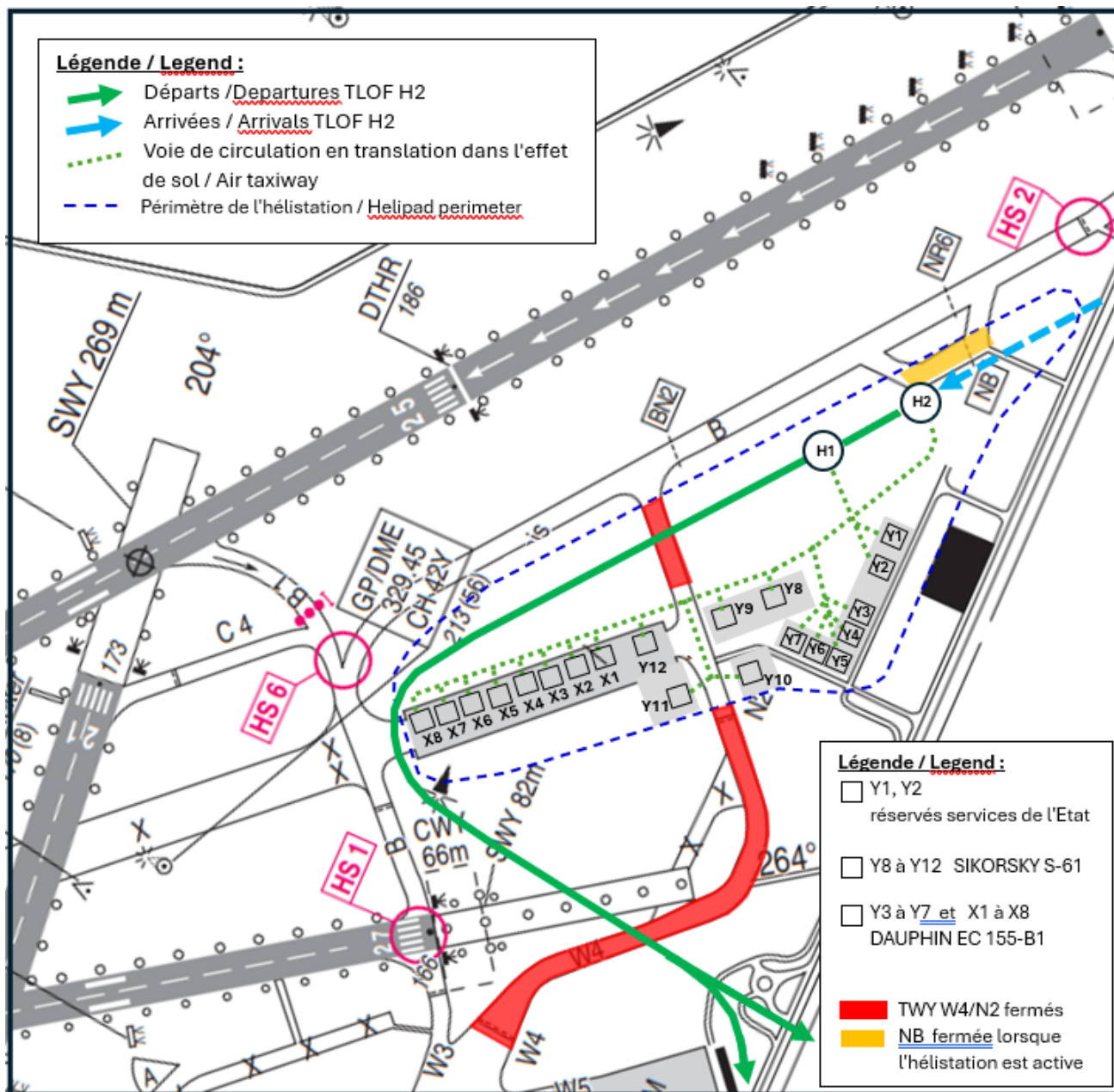
SALON DU BOURGET 2025

HELISTOP AND LOCAL CIRCLING - HELICOPTER ARR/DEP FACING WEST

PARIS – LE BOURGET



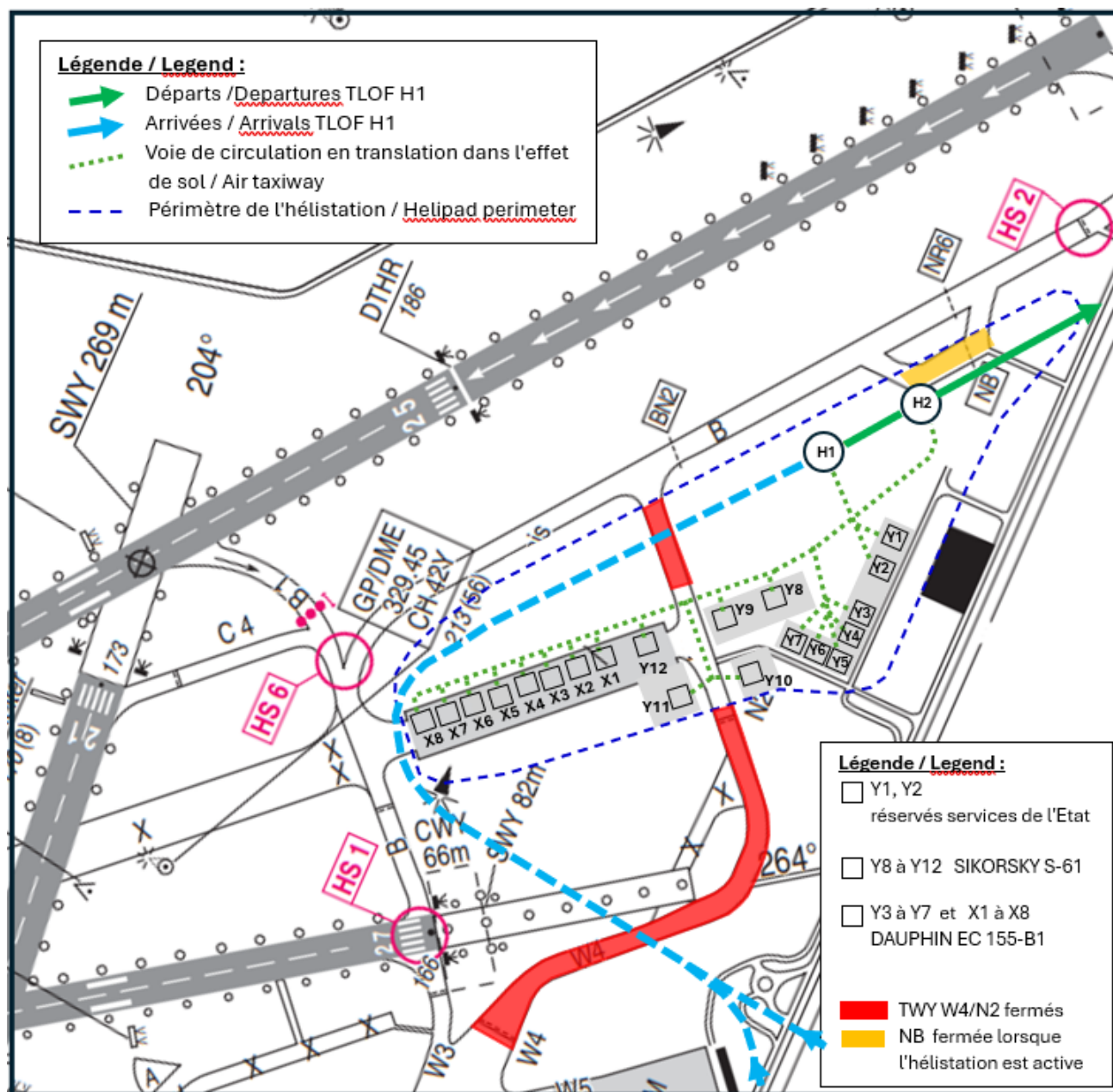
APPENDIX VII

SALON DU BOURGET 2025
HELICOPTERS VILLAGE – Configuration West ward

Background map 2024

APPENDIX VIII

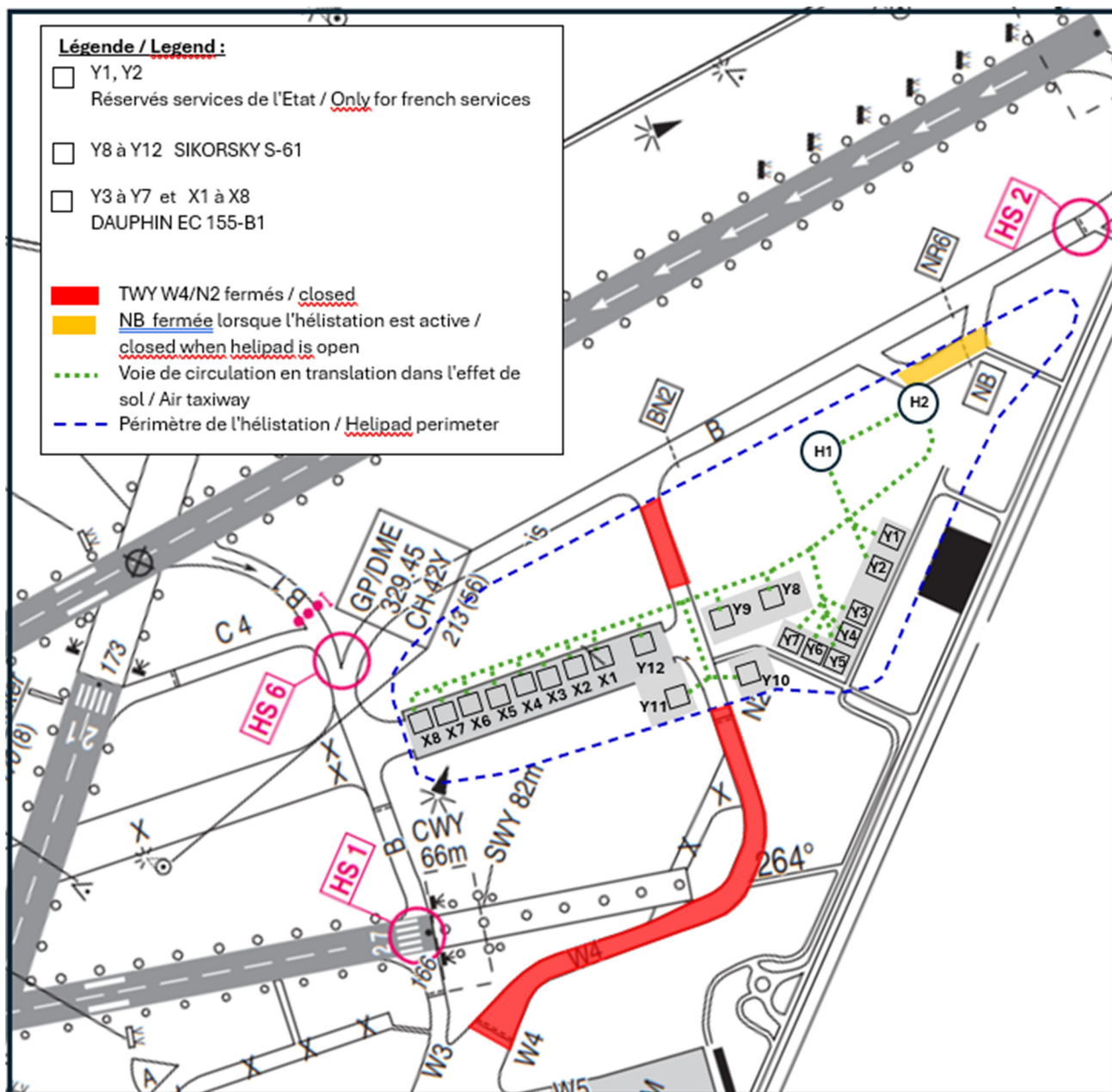
SALON DU BOURGET 2025
HELICOPTERS VILLAGE – Configuration East ward



Background map 2024

APPENDIX IX

SALON DU BOURGET 2025 - HELICOPTERS STANDS



Background map 2024

APPENDIX X

SUMMARY OF SPECIFIC PROVISIONS PER ACTIVITY AND PER AERODROME

	Entry possible in :		Accreditation Required (7)	FPL required	Flight intention	Remarks
	ZIT ROUGE	ZRT BLEUE				
ACTIVITY 1 : French Defense, customs, police, gendarmerie and public safety ACFT flying as part of their missions	YES	YES	NO	NO		If a FPL is filed, follow the usual rules.
ACTIVITY 2 : Hospital flights, search and rescue flights, assistance flights, aircraft flying in the area for technical and safety reasons	YES	YES	ZIT : YES (1) ZRT : NO	IFR GAT : YES, usual deadline VFR GAT and OAT: - planned activities (3): YES, deadline 2 HR before (2) - urgent activities : NO	YES (1)	Entry in ZRT/ZIT is possible ONLY if the avoidance is not compatible with these missions.
ACTIVITY 3 : IFR GAT going to or departing from DE GAULLE, ORLY, PARIS-SACLAY- VERSAILLES, PONTOISE, BEAUVAIS or VILLACOUBLAY	YES (4)	YES	NO	YES, usual deadline	NO	Use the published routes authorized by the usual ATC units.
ACTIVITY 4 : IFR GAT going to or departing from LE BOURGET 4a : ACFT on display or participating to SIAE 4b : other flights departing from or bound to LE BOURGET	YES	YES	YES (1)	YES - deadline 2 HR before (2)	NO	Use the published routes authorized by the usual ATC units. The BPV manages the accreditations of the aircraft participating in the International Paris Air Show (SIAE). Daily closure of LE BOURGET airfield (see paragraph 3.1).
ACTIVITY 5 : VFR GAT going to or departing from ISSY-LES-MOULINEAUX heliport and included in the lists of authorized flights (except flights connecting with LE BOURGET - see ACTIVITY 6)	NO (5)	YES	NO	YES - deadline 2 HR before (2)	YES (1)	Use of Issy heliport reserved for helicopters included in the established lists (see paragraph 6.4 and AIC). Radio contact must be made with ATS before entering ZRT BLEUE for identification.
ACTIVITY 6 : GAT VFR, going to or departing from LE BOURGET 6a : ACFT on display or participating to SIAE 6b : helicopters on « LE BOURGET / ISSY-LES-MOULINEAUX » route	YES	YES	YES (1)	YES - deadline 2 HR before (2)	YES (1)	The BPV manages the accreditations of the aircraft participating in the International Paris Air Show (SIAE). Daily closure of LE BOURGET airfield (see paragraph 3.1).

	Entry possible in :		Accreditation Required (7)	FPL required	Flight intention	Remarks
	ZIT ROUGE	ZRT BLEUE				
ACTIVITY 7 : GAT/VFR departing from or going to ORLY or LOGNES (except for flights connecting with LE BOURGET - see activity 6)	NO	YES	NO	YES deadline 2 HR before (2)	YES (1) (6)	
ACTIVITY 8 : Unmanned ACFT	NO (8)	YES	NO	NO	NO (9)	Submission of applications as usual.

(1) Security measures : see paragraph 6 and AIC.

(2) FPL must be sent, in addition to the usual addresses, to the following addresses : LFXOYWYX, LFBWYWYX and LFXVYWYX, within box 18, the accreditation numbers for activities 2, 4 and 6.

Aircraft flying aerodrome traffic patterns and aircraft based at LE BOURGET, ISSY LES MOULINEAUX and LOGNES are not required to file a FPL. For helicopters departing from ISSY LES MOULINEAUX, filing a FPL is not required (flight planned on the day before, control procedures of departures).

(3) or activities which cannot be planned on the day before – which are not emergency activities.

(4) For commercial activities only. Private IFR or training IFR flights are not allowed. Air traffic flow regulations, which could go as far as flight suspensions, may be implemented by military authorities.

(5) except for flights going to or departing from ISSY LES MOULINEAUX via IH3 - Porte de Bercy - Mont d'Est.

(6) For ACFT departing from or going to LOGNES : see paragraph 5.2 and AIC.

(7) From 11 to 22 June inclusive during activation slots of ZIT Rouge and ZRT Bleue.

(8) Except with authorization of C2A2.

(9) Only those operating in ZIT ROUGE are required to register their intention to fly.