

Subject : Restriction of use for RWY 08L/08R and 26L/26R at Paris Charles de Gaulle AD LFPG due to 55th Paris Le Bourget International Air Show (SIAE)

With effect : From 10th to 22nd June 2025

Location : AD Paris Charles De Gaulle (LFPG)

Introduction :

Flight demonstrations during the International Paris Air Show affect the western side of operations on runways 08L/R and 26L/R.

All times given below are UTC and provisional, they correspond to the longest possible timeslots ; they will be confirmed by DE GAULLE ATIS in real time. The most impacting time slot lasts 30 minutes maximum between 1300 and 1400.

1. Easterly operations

1.1. Departures from 1130 to 1430

RWY 09L/R and 08L/R are available without any restrictions for departures.

1.2. Arrivals

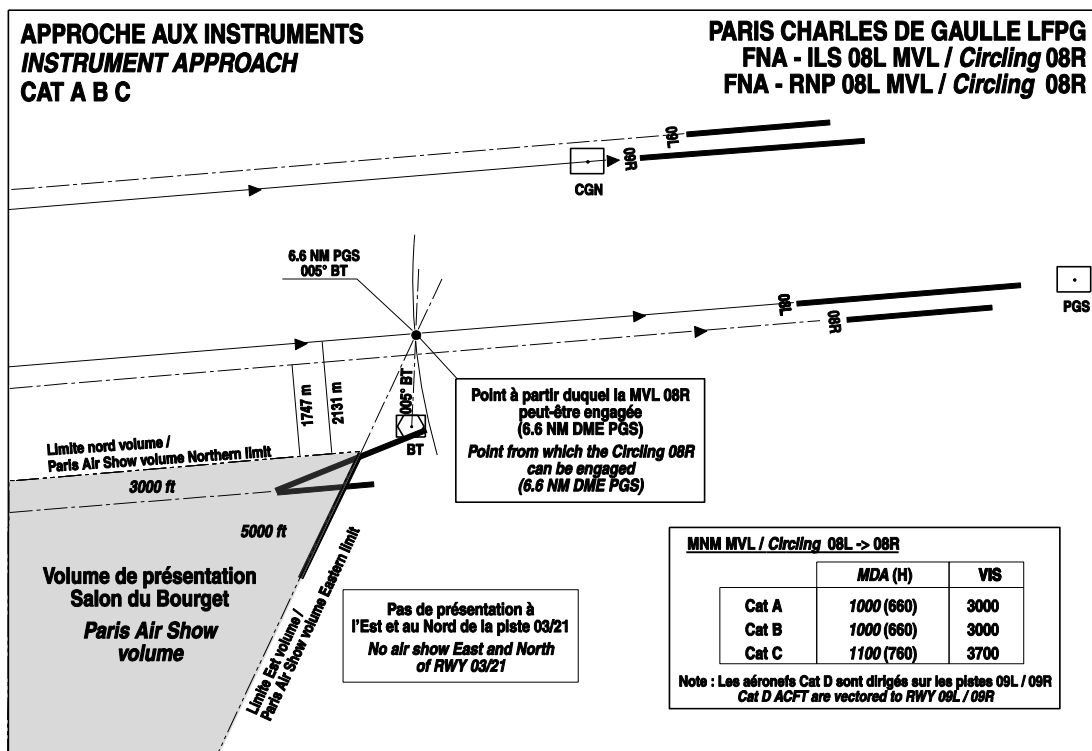
1.2.1. From 1130 to 1300 and from 1400 to 1430

RWY 09L and 09R are available without any restrictions for arrivals.

Arrivals on RWY 08L and 08R can be operated within the following conditions :

If Horizontal Visibility ≥ 5 km and ceiling ≥ 3000 ft :

- for Heavy wake turbulence category ACFT or the A380, RWY 08L and 08R can not be used for landings.
- for Medium and Light wake turbulence category ACFT :
 - RWY 08R can be used for landings of ACFT performing a 08L ILS or RNP approach followed by visual manoeuvring to land on RWY 08R;
 - Visual manoeuvring towards RWY 08R should not be engaged before 6.6 NM DME PGS ;
 - RWY 08L can be used for landings by ACFT performing a 08L ILS or RNP approach.



If Horizontal Visibility < 5 km or ceiling < 3000 ft :

- RWY 08R cannot be used for landings ;
- RWY 08L can be used for landings of Medium and Light wake turbulence category aircraft only.

1.2.2. From 1300 to 1400

RWY 09L and 09R can be used for landings without any restrictions.

RWY 08L and 08R can not be used for landings.

2. Westerly operations

2.1. Departures

2.1.1. From 1130 to 1300 and from 1400 to 1430

RWY 27L and 27R are available without any restrictions for departures.

RWY 26L can not be used for departures.

Departures from RWY 26R are available for Medium and Light wake turbulence category aircraft only.

Departures from RWY 26R must reach 4000 FT AMSL not later than 6.3 NM DME PGS.

To help comply with this restriction, TWY R1 is the only TWY available to line up for departures from RWY 26R.

If a technical or weather event occurring after take-off prevents the aircraft from complying with this restriction, or prevents the departure path from being followed precisely, the crew must inform ATC as soon as possible.

2.1.2. From 1300 to 1400

RWY 26L and 26R can not be used for departures.

RWY 27L and 27R can be used without any restrictions for departures.

ACFT with a SID ELCOB LGL AGOPA ERIKU LATRA OKASI PILUL 6A are likely to be rerouted on a SID 6Z.

2.2. Arrivals

2.2.1. From 1130 to 1430

RWY 27L and 27R are available without any restrictions for arrivals.

RWY 26L and 26R can be used for landings, but the missed approach is modified as defined in paragraph 2.2.2 below.

2.2.2. Missed approach on RWY 26L/R

Missed approaches 26L/R following ILS, LOC/DME and RNP approaches are modified as follows :

"Missed APCH 26L/R : climb 4000ft AMSL on runway track, at minimum 800 ft AMSL and not before 1NM DME DSU/GAU on final, turn left heading 180°, IAS ≤ 220 kt, expect radar vectors."

The implementation of these procedures will be announced on DE GAULLE ATIS.

SALON DU BOURGET 2025

APPROCHE AUX INSTRUMENTS CAT A, B, C
(réservée aux aéronefs de catégorie de turbulence Medium et Light)
INSTRUMENT APPROACH CAT A, B, C
(reserved for Medium and Light wake turbulence category ACFT)

PARIS CHARLES DE GAULLE LFPG – FNA
ILS 08L MVL (Circling) 08R et/and RNP 08L MVL (Circling) 08R

